



Washington County

M A R Y L A N D

CEAM Spring 2025 Conference
May 9, 2025

MAKING THE PERMIT WORK
Stormwater Management &
Watershed Restoration in Western MD

What we do

Washington County, Maryland
MAKING THE PERMIT WORK



We are tasked with managing multiple state and federal unfunded mandates that have the *intended* purpose of improving local water quality for local residents, and the Chesapeake Bay.

We do this by working with partner agencies (local, state, and federal) to develop a comprehensive understanding of the mandated pollution reduction goals that allows us to provide the most accurate information to senior staff and elected officials so that they can make the best decisions for the county.

Upon receiving guidance from the chain of command, we plan the county's response, coordinate and implement reduction strategies, and track-verify-report all actions being performed in pursuit of the mandated goals.

Phase II MS4

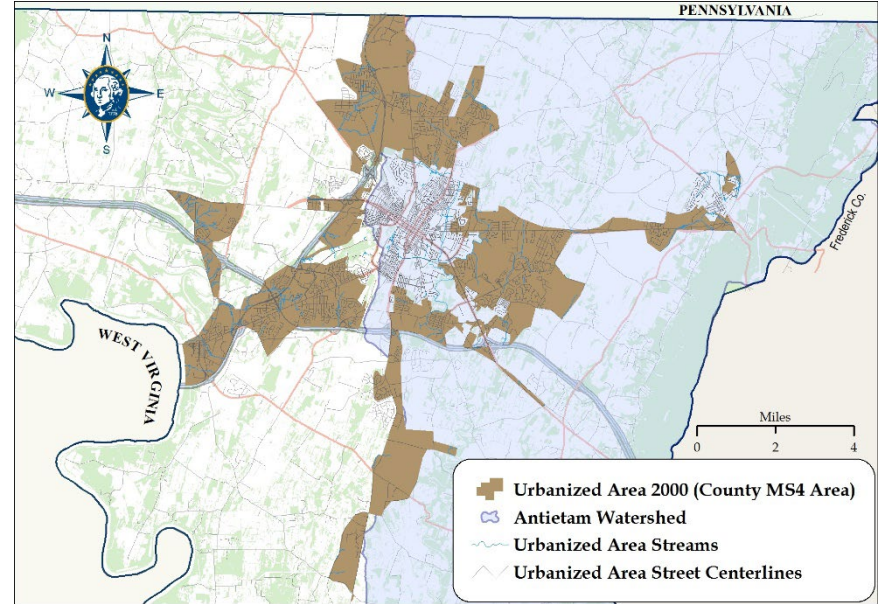
Washington County, Maryland
MAKING THE PERMIT WORK



Washington County is a
Phase II MS4

There are four municipals
that have MS4 permits

- **Hagerstown**
- **Williamsport**
- **Boonsboro**
- **Smithsburg**





Focus on 6 Minimum Control Measures

1. Public Education & Outreach
2. Public Participation
3. Illicit Discharge Detection and Elimination
4. Management of Construction Site Runoff
5. Management of Post Construction Site Runoff
6. Good Housekeeping in Municipal Operations



Total impervious acres of jurisdiction covered under this permit: 4347.93

Total impervious acres treated by stormwater water quality best management practices (BMPs): 615.45

Total impervious acres treated by BMPs providing partial water quality treatment (multiply acres treated by percent of water quality provided): TBD

Total impervious acres treated by nonstructural practices (i.e., rooftop disconnections, non-rooftop disconnections, or vegetated swales): 142.10

Total impervious acres untreated in the jurisdiction: 3590.38

Twenty percent of this total area (this is the restoration requirement): 718.08

Collaboration

Washington County, Maryland
MAKING THE PERMIT WORK



*What is **COLLABORATION**?*

- 1. the action of working with someone to produce or create something.*
- 2. traitorous cooperation with an enemy*

When the towns received their permits, we held a local MS4 conference for town staff to open dialogue and provide context and technical assistance.

Our team works with our MS4 towns at every chance we get. Frankly, it's not that frequently.



 Clean County
JOINT CLEAN-UP
Event in April with the Town of Williamsport



April 15, 2023
9 a.m. - 12 p.m.

Join the Town of Williamsport and the Washington County Clean County Initiative Clean-Up Crew at this joint clean-up event at River Bottom Park.
Rain date is April 22nd.

This event qualifies for students SSL hours

Collaboration

Washington County, Maryland
MAKING THE PERMIT WORK



We collaborate with the MS4 towns on managing their BMP database, assisting their staff and contractors with planning and technical expertise, community outreach events and subject matter expertise.

At the end of the day, the towns are responsible for meeting their permit requirements. Not an easy task for small, rural towns with historic features.





We don't just collaborate; We build partnerships and relationships.

Not only do we assist other permittees in their implementation efforts, but we also work alongside community groups, businesses, churches, and tons of schools in the pursuit of cleaner water. In FY23 we conducted 35 outreach events.

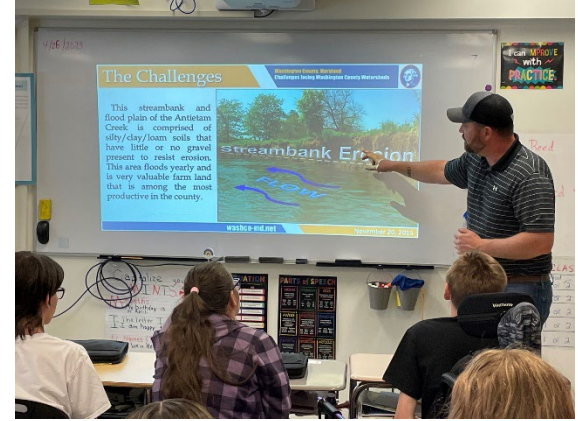
We believe in efficient and judicious use of taxpayer dollars, and we ensure that all our efforts align with local sentiment and goals.



Schools

The BOE is the largest source of impervious surfaces in our public sector.

We work very closely with schools on BMPs(trees, rain gardens, cleanups) and curriculum-based projects like MWEEs.





Schools

We find value in supporting educators and helping to bring science and environmental projects to life for the students.

BOE is our largest partner in tree plantings and honestly, one of our fiercest supporters.





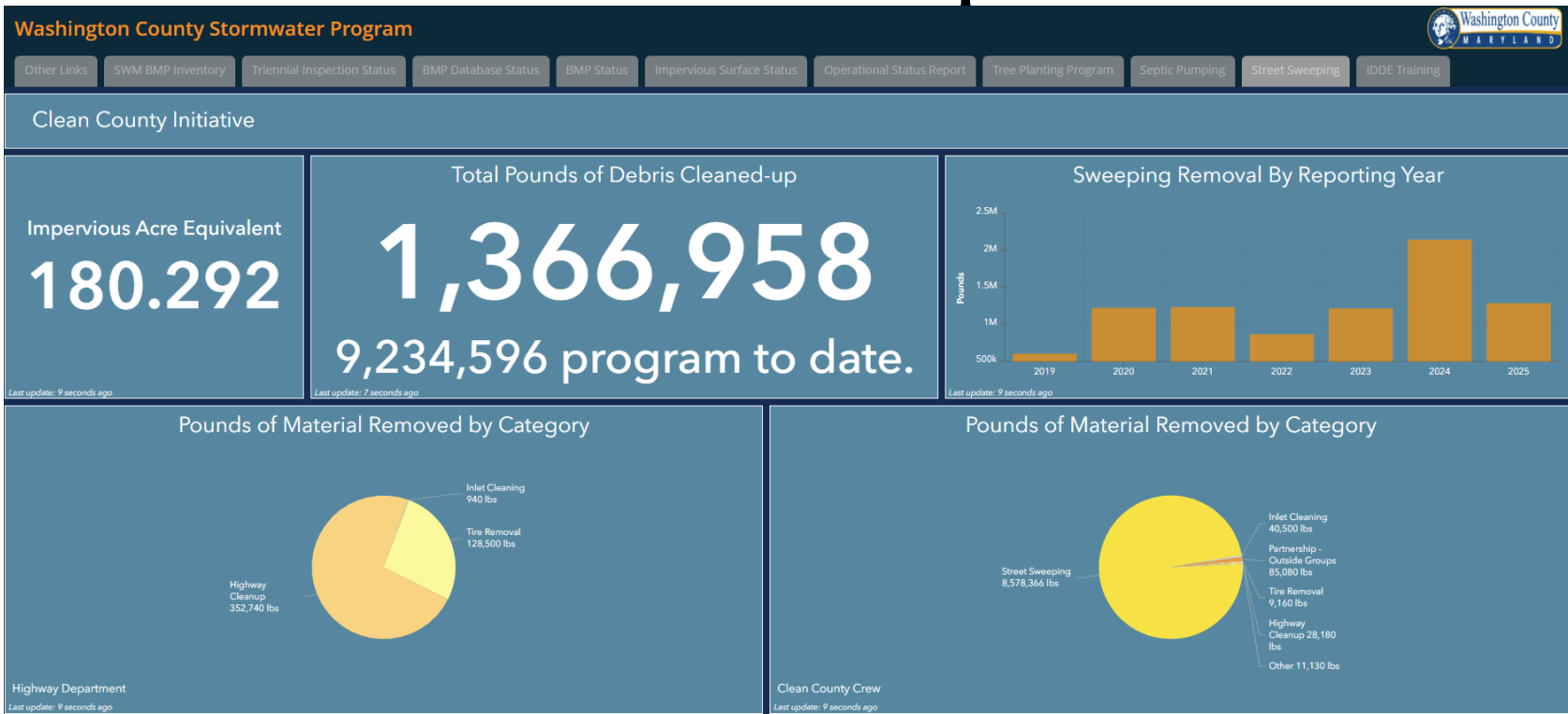
Street Sweeper

- Our street sweeper works across the county with a dump truck to maximize time and distance.
- Inlet cleaning





Street Sweeper





Stream Restoration

We are focused on restoration wherever we can work.





Dashboards

<https://maps.washco-md.net/swmPortal/>

https://www.instagram.com/watershed_specialist/

<https://www.washco-md.net/environmental-management/watersheds/>



Community Groups

We are fortunate to have some of the most dedicated volunteer organizations in the Bay Watershed working with us.

These people do what they do because they care about their home and are not waiting around for someone else to fix what needs fixing.



Public Participation

Washington County, Maryland
MAKING THE PERMIT WORK



Community Groups

Tree Planting
Water Quality Monitoring
Outreach
Community Engagement
MS4 and WIP Advocacy
Cleanup Events
BMP Implementation
Public Awareness



Community Leaders

Washington County, Maryland
MAKING THE PERMIT WORK



These
people
are not
well!



washco-md.net

May 9, 2025



Businesses

We have been able to depend on a supportive business environment because we have demonstrated that we have built trust, and we listen to what they have to say.

We participate in our Home Builders Association monthly meetings where we can dispel myths and explain technical aspects of the NPDES and other water quality programs.



Earth Day & Stormwater Week

Every year around Earth Day, we celebrate by having a weeklong stormwater awareness campaign with events and videos about local issues and stormwater education.





Marews Stormwater Adventure

We identified a gap in stormwater knowledge, so I wrote a book to teach kids (and adults) how pollution gets into stormwater network.



Questions

Washington County, Maryland
MAKING THE PERMIT WORK



Questions?



Alex Reed
Watershed Specialist
Washington County, MD
areed@washco-md.net

John Swauger
NPDES Manager
Washington County, MD
jswauger@washco-md.net

Follow Us:



WashingtonCountyMD



@WashingtonCoMD



WashingtonCountyMD